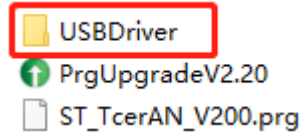
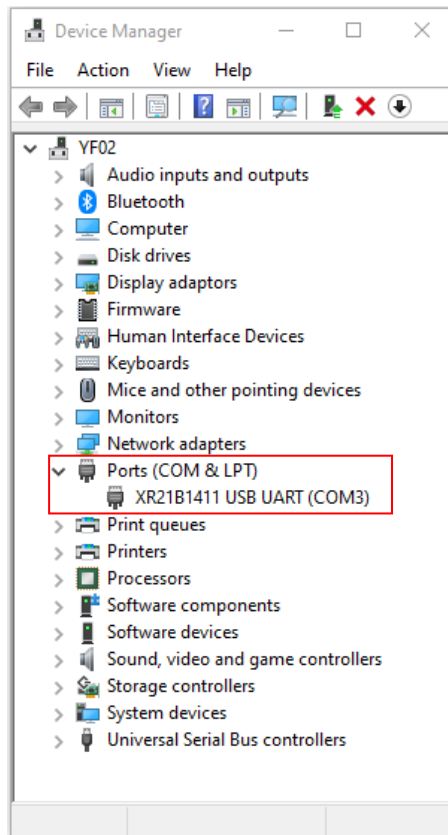


Controller Software Upgrade

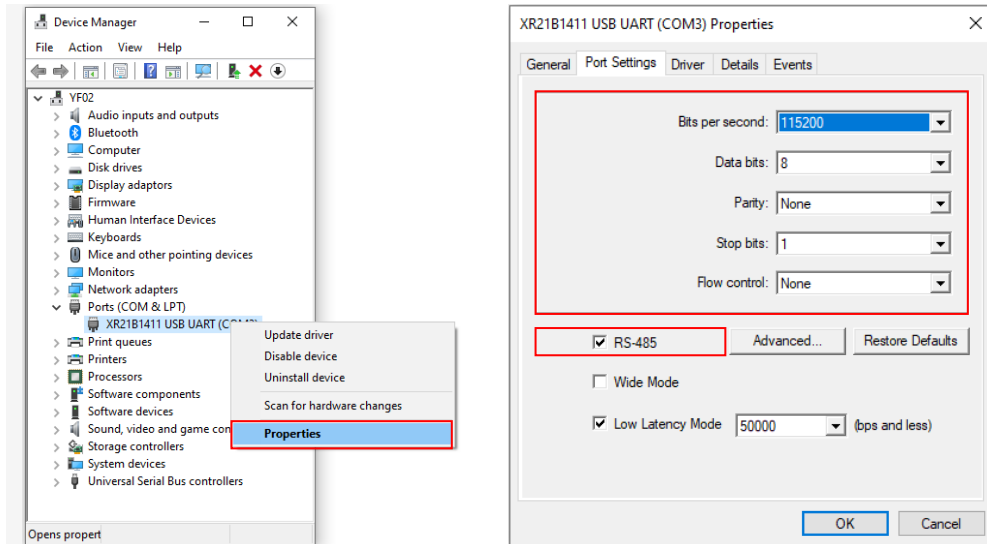
Step1: Double-click the "USBDriver" folder > "Setup" to install the USB driver (USB to RS485 converter model: CC-USB-RS485-150U).



After successful installation, connect the USB to RS485 converter to the PC. Open the "Device Manager > Ports (COM & LPT)" to display the following interface.




Step2: Set the USB to RS485 converter's port parameters by the following figure.

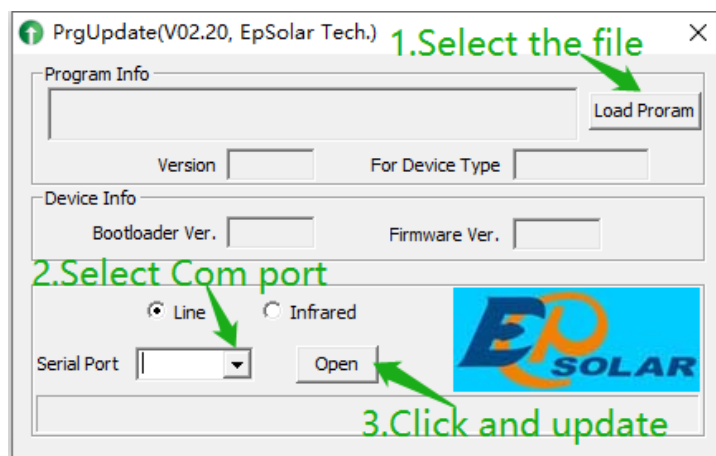


Step3: Connect the controller to the PC by the USB to RS485 converter. And then connect the controller to the battery.

Note: A switch must be connected between the controller and the battery, such as an DC breaker or fuse, etc. Do not power on the controller at this time.



Step4: Double-click  PrgUpgradeV2.20 to open the upgrade software, the following interface displays.

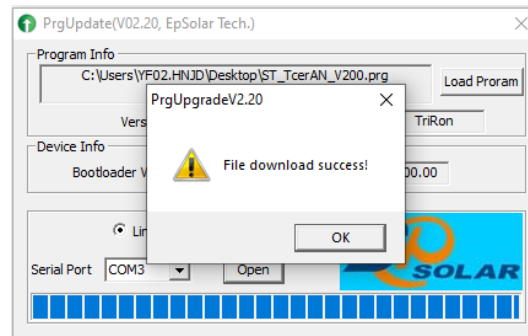


Step5: Click the "Load Program" button to select the upgrade file according to the specified controller, such as ST_TcerAN_V200.prg.

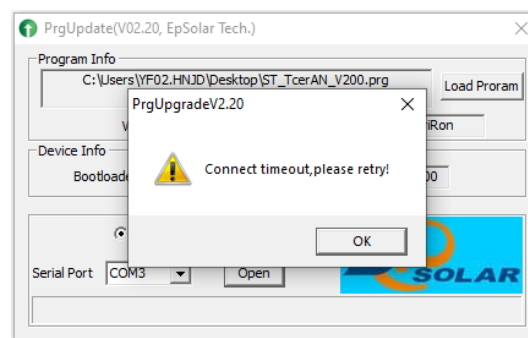
Step6: Select the COM port from the "Serial Port" drop-down list box (The default COM port is COM1.) Then click the "Open" button.

Step7: Power on the controller, and the upgrade software automatically displays the loading process.

When the loading progress has finished successfully, a prompt of "File download success!" pops up, and the controller LCD will also be lit up.



Note 1: If the loading progress is interrupted unexpectedly, a prompt of "Connect timeout, please retry!" pops up. It indicates the upgrade has failed and needs to be retried again!



Note 2: If you upgrade the controller with unmatched software, the controller may be damaged. The pictures in this manual are for reference only; please contact the after-sales for detailed upgrade software.